



Pinpoint the Location of a Leak

Sensus Analytics Acoustic Monitoring application for the Permalog+ logger

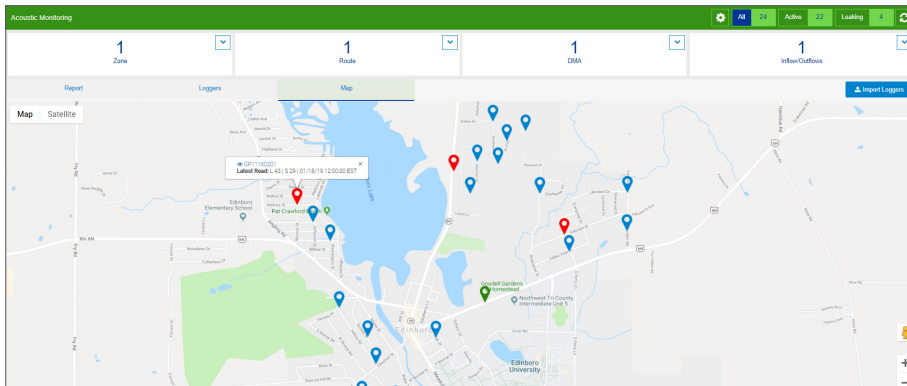
The Sensus Analytics Acoustic Monitoring application combines the proven Permalog® technology with the Sensus FlexNet® communication network and Sensus SmartPoints® to deliver a powerful, remote leak detection solution. Using sound waves to detect flow, Permalog+ modules activate overnight, listening to the distribution system when ambient noise is at its lowest. Sensus SmartPoint modules carry real-time data via FlexNet to Sensus Analytics where flow conditions are reported. The Acoustic Monitoring application automatically analyzes the data and sends an alert if a leak condition exists. Service crews can quickly investigate and make repairs before they become costly problems or prominent stories in the news.

The Acoustic Monitoring application provides more robust data and intelligent analytics to locate a leak or monitor other flow conditions. Gaining insight into critical data regarding field conditions can help improve your operations and mitigate risks associated with aging infrastructure. Viewing your data in a single portal allows you to identify, investigate, and quickly make decisions. At the service connection, you can deploy ally® residential smart water meters with integrated pressure monitoring capabilities to map the pressure at the user level.

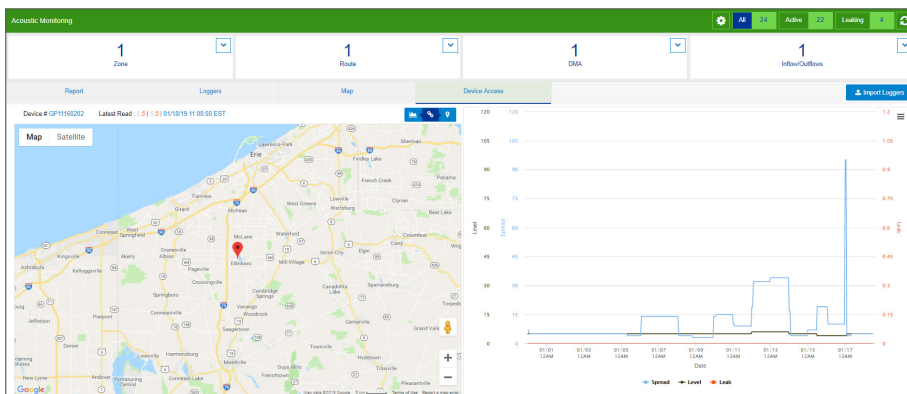
- Sortable and filterable table, graph and map and views
- GIS driven dashboard for visualization of device location and distribution
- Straight line measurement between two loggers to measure distance
- Historical logger data plotted over time
- Color coding map pinpoints by threshold numbers



Conserve water, improve customer service and regain lost revenue with the reliability, speed and accuracy of the FlexNet communication network and the Acoustic Monitoring application in Sensus Analytics.



Clear data visualization for immediate pinpointing of potential leaks.



Historical data and multiple views for faster and more robust insights.

| Leakage | Logger | Leak Status | Level | Spread | Date/Time | Zone | Route | District Metering Area | Flow Direction | Location Note |
|---------|------------|-------------|-------|--------|-----------------------|------|-------|------------------------|----------------|------------------------|
| | GP11160181 | false | 7 | 3 | 01/18/19 12:00:00 EST | NA | NA | NA | NA | Pemulog Device: GP1116 |
| | GP11160182 | false | 5 | 3 | 01/18/19 12:00:00 EST | NA | NA | NA | NA | Pemulog Device: GP1116 |
| | GP11160187 | false | 10 | 7 | 01/18/19 12:00:00 EST | NA | NA | NA | NA | Pemulog Device: GP1116 |
| | GP11160189 | true | 10 | 5 | 01/18/19 12:00:00 EST | NA | NA | NA | NA | Pemulog Device: GP1116 |
| | GP11160201 | true | 43 | 29 | 01/18/19 12:00:00 EST | NA | NA | NA | NA | Pemulog Device: GP1116 |
| | GP11160231 | false | 4 | 7 | 01/18/19 12:00:00 EST | NA | NA | NA | NA | Pemulog Device: GP1116 |
| | GP11160236 | false | 9 | 6 | 01/18/19 12:00:00 EST | NA | NA | NA | NA | Pemulog Device: GP1116 |
| | GP11160202 | false | 5 | 5 | 01/18/19 11:00:00 EST | NA | NA | NA | NA | Pemulog Device: GP1116 |
| | GP11160233 | false | 11 | 3 | 01/18/19 11:00:00 EST | NA | NA | NA | NA | Pemulog Device: GP1116 |
| | GP11160234 | false | 10 | 2 | 01/18/19 11:00:00 EST | NA | NA | NA | NA | Pemulog Device: GP1116 |

Customizable, sortable and filterable reporting for in-depth analysis.

Benefits

- Expand your view to pinpoint a more precise leak location
- Receive more accurate information to make data driven decisions
- Proactively detect leaks and other flow problems for preventative maintenance
- Discover and regain non-revenue water
- Reduce risk and liability
- Improve customer service

Features

- GIS driven dashboard
- Ability to set custom threshold alarms
- Custom color coding
- Historical data
- Custom reporting
- Download to Excel, PDF, csv for reporting, sharing and further analysis



8601 Six Forks Rd, Ste 700
Raleigh, NC 27615
1-800-638-3748
sensus.com

©2019 Sensus. All products purchased and services performed are subject to Sensus' terms of sale, available at either sensus.com/TC or 1-800-638-3748. Sensus reserves the right to modify these terms and conditions in its own discretion without notice to the customer. *The Sensus logo is a registered trademark of Sensus.*

This document is for informational purposes only, and SENSUS MAKES NO EXPRESS WARRANTIES IN THIS DOCUMENT. FURTHERMORE, THERE ARE NO IMPLIED WARRANTIES, INCLUDING WITHOUT LIMITATION, WARRANTIES AS TO FITNESS FOR A PARTICULAR PURPOSE AND MERCHANTABILITY. ANY USE OF THE PRODUCTS THAT IS NOT SPECIFICALLY PERMITTED HEREIN IS PROHIBITED.