

# Sensus VantagePoint

## Lighting Software

By combining intuitive software with reliable control nodes and a robust communication network, cities and utilities are able to transform their existing street lighting infrastructure into a fully integrated smart lighting solution.

### FEATURES

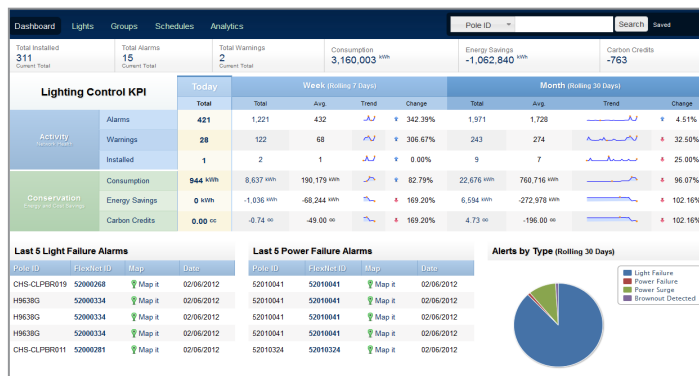
- Map-based interface with fixture locations
- Monitoring and alarming for intelligent maintenance dispatch
- Dispatched alarm notices with sorting, history, and GIS capture
- Measuring and reporting power consumption
- On/off event scheduler with sunrise and sunset management
- Light-level control through dimming
- Software-as-a-Service (SaaS) in a secure cloud-based environment
- AES-256 encryption over licensed RF spectrum

### BENEFITS

- Confirmed energy and maintenance savings
- Control legacy and LED fixtures with one module
- Easy deployment with auto-install module capability
- Fixture and lighting control by public safety officials

The Sensus VantagePoint® software gives operators complete visibility and control over their lighting network. With its intuitive interface, operators can access dashboards or street-level mapping views to oversee the entire service territory. VantagePoint combines real-time data visualization with alarm capabilities. Operators are immediately alerted to common streetlighting issues such as day burners or outages—without having to wait for a customer to call. Maintenance crews are able to address problems quickly, keeping your residents satisfied and happy.

Lights can be configured individually or in groups. Whether it's incorporating sunrise and sunset schedules, changing dimming levels for specific locations, or even turning off streetlights during a holiday fireworks show, with VantagePoint the power is in your hands. It's an intelligent approach to streetlight control.



### Offset Sunrise/Sunset Schedule

Enter time in increments of 5 minutes.

☀ Turn lights ON 0 min. before after Sunset. Set to 100% intensity.

🌙 Turn lights OFF 0 min. before after Sunrise.



[Xylem.com](http://Xylem.com) | [Sensus.com](http://Sensus.com)

**SENSUS** | 637 Davis Drive | Morrisville, NC 27560 | 800.638.3748

©2020 Sensus. All products purchased and services performed are subject to Sensus' terms of sale, available at either [sensus.com/TC](http://sensus.com/TC) or 1-800-638-3748. Sensus reserves the right to modify these terms and conditions in its own discretion without notice to the customer. The Sensus logo is a registered trademark of Sensus.

This document is for informational purposes only, and SENSUS MAKES NO EXPRESS WARRANTIES IN THIS DOCUMENT. FURTHERMORE, THERE ARE NO IMPLIED WARRANTIES, INCLUDING WITHOUT LIMITATION, WARRANTIES AS TO FITNESS FOR A PARTICULAR PURPOSE AND MERCHANTABILITY. ANY USE OF THE PRODUCTS THAT IS NOT SPECIFICALLY PERMITTED HEREIN IS PROHIBITED.