



Redefining the standard for meter accuracy and performance

accurate  
WAVE™  
diaphragm

 **SENSUS**



### Looks Can Be Deceiving

When it comes to gas meters, it's what's inside that counts. Literally. And our time proven R-275, 315 and 415 meters are making waves in the market, thanks to the revolutionary accuWAVE™ diaphragm. This new patent-pending design tracks consumption better than ever.

### accuWAVE Delivers More

- Longer life expectancy
- Improved long-term performance
- Exceptional proof stability
- Lower overall lifetime cost

Sensus engineers have taken diaphragm technology to a new level, improving accuracy, reliability and overall product life span – the most anyone can expect from a non-electronic meter.

### Patent-pending Wave Design

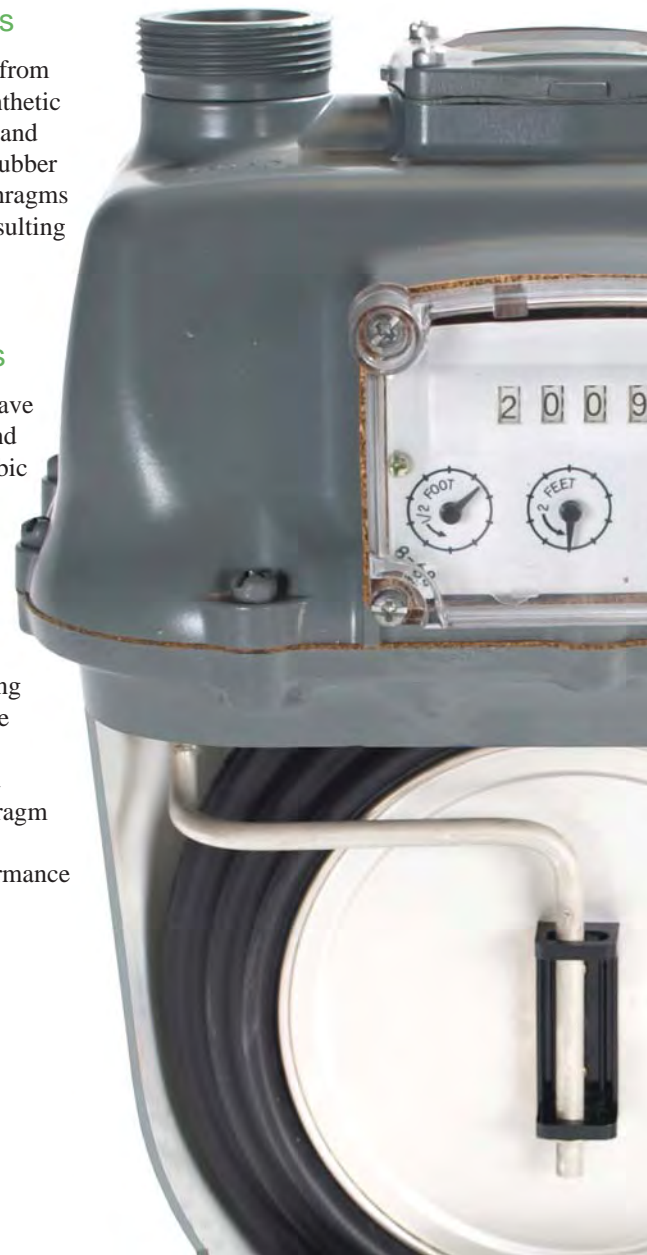
The wave-shaped diaphragm expands and contracts with smooth precision, ensuring complete fill and discharge with a gentle fluid motion. This natural wave movement results in exceptional proof stability from factory to the field and over the life of the meter.


### Proprietary Molding Process

accuWAVE diaphragms are molded from reinforced Buna-N, an advanced synthetic rubber compound that retains shape and elasticity better than fabric-backed rubber products. Molding accuWAVE diaphragms ensures unparalleled consistency, resulting in exceptional adherence to design tolerances and less waste.

### Performance, Not Promises

accuWAVE diaphragm test meters have surpassed 16,000 hours in service and measured more than four million cubic feet of natural gas – that's over four-times the ANSI standard for accelerated life-testing and equal to forty-plus years of service at an average home in the United States with gas heat. The test meters have remained in service 24/7 at our testing facility, running at full capacity since passing ANSI B109 standards in February, 2009. Time-after-time and test-after-test, the accuWAVE diaphragm design continues to prove itself as a leader in consistent long-term performance and stability.



 Sensus accuWAVE meters are proven in extreme conditions - meeting or exceeding ANSI B.109 lifetime testing standards and Bally BS4161 standards for diaphragm flexibility.

"We were impressed with the performance data\* backed by design improvements we could see for ourselves. And the meters in-tested very well, making accuWAVE diaphragm meters a big hit with us."

- A large regional investor-owned utility

\*ANSI Accelerated Life Test

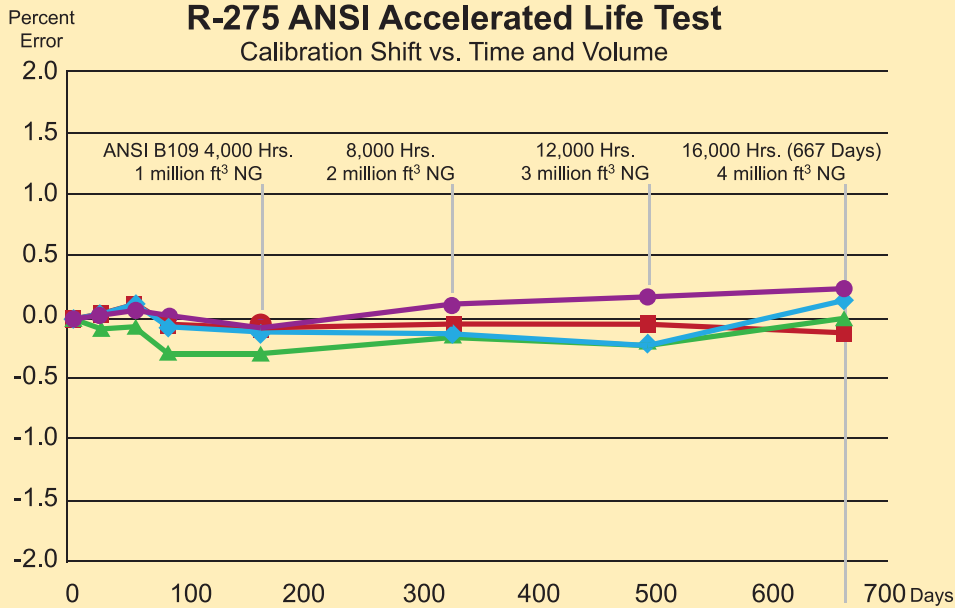
# Specifications

		R-275	S-275	315	415
Capacity (ft <sup>3</sup> /h)	Natural Gas	275	250	315	415
	Butane	150	150	170	225
	Propane	175	175	200	260
	Air	215	195	245	320
	MAOP	5-10 psi	5-10 psi	5-10 psi	10-25 psi
Weight		14 Lbs.	14 Lbs.	14 Lbs.	21 Lbs.
Connections		10, 20, 30 Lt. 1 1/4, 1A & #2 Spg.	3/4" NPT	20, 30, 45 Lt. 1 1/4, 1A & #2 Spg.	20, 30, 45 Lt. 1 1/4, 1A, #2 & #3 Spg.
Revolutions (ft <sup>3</sup> )		8	8	8	6.5

All meters meet ANSI B109 specifications and are available in temperature and non-temperature compensated models. Indexes are available in imperial and metric standard 4-dial circular reading; standard 4-, 5-, and 6-wheel direct reading; 4-wheel high resolution; and 4-wheel test options.

## R-275 ANSI Accelerated Life Test

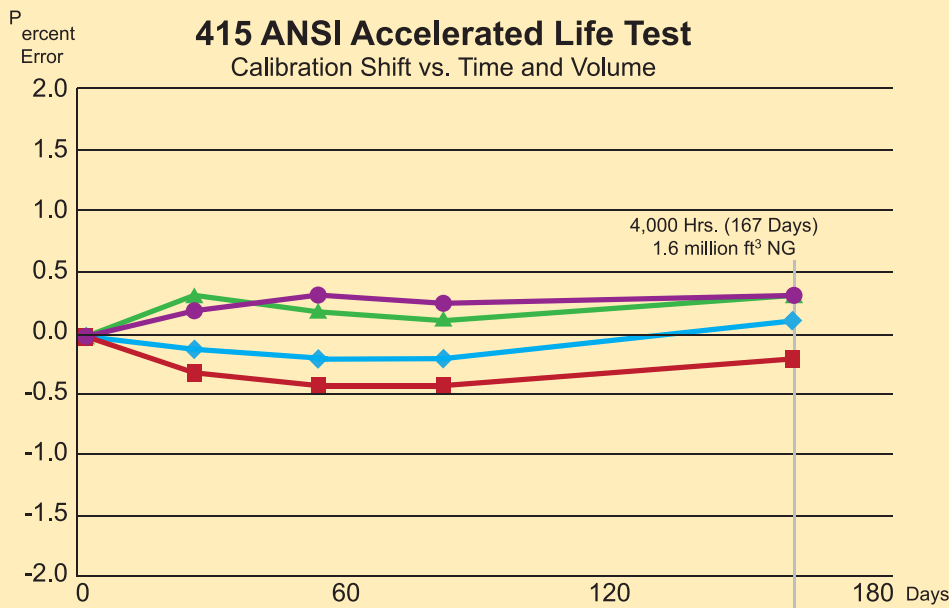
Calibration Shift vs. Time and Volume



- ◆ NTC Check Avg.
- NTC Open Avg.
- TC Check Avg.
- ▲ TC Open Avg.

## 415 ANSI Accelerated Life Test

Calibration Shift vs. Time and Volume



- ◆ NTC Check Avg.
- NTC Open Avg.
- TC Check Avg.
- ▲ TC Open Avg.



## Sensus: a history of innovation

Whether known by names such as Equitable Meter, Rockwell, Equimeter, Invensys or Sensus, utilities have turned to us for reliable measurement solutions from the very beginnings of the gas industry. We're Sensus, and we're investing in the research and development of new technologies that will ensure an intelligent use and conservation of our world's critical energy resources.

Learn more at [www.sensus.com/gas](http://www.sensus.com/gas).