

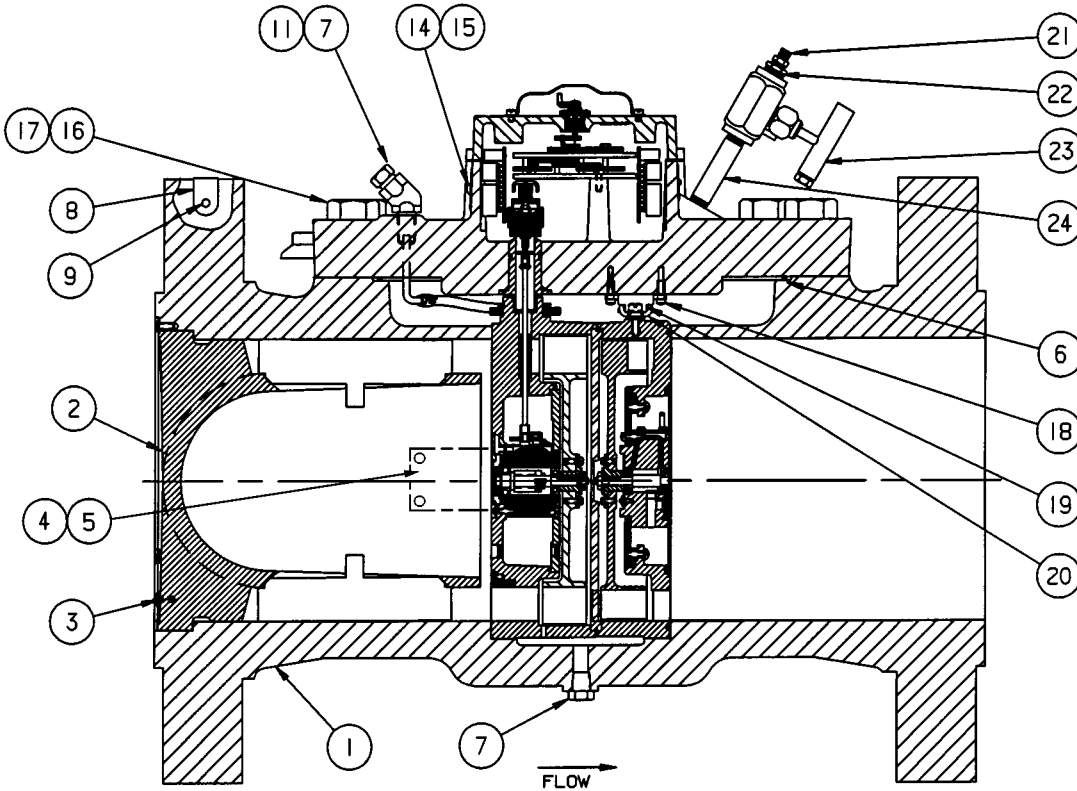


Parts List
200mm, A200U30 and A200U45
Auto-Adjust® II Turbo-Meter

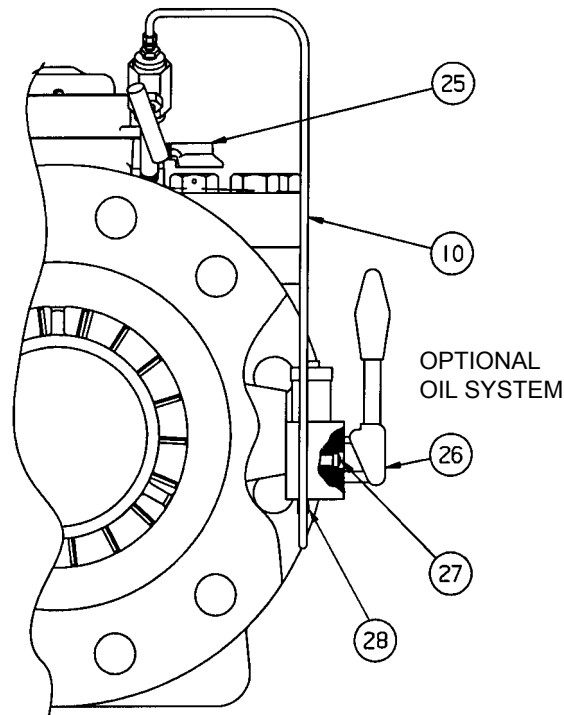
Parts List
200mm, A200U30 and A200U45
Auto-Adjust® II Turbo-Meter

WORKING PRESSURES:
16, 50 and 100 bar

200mm, A200U30 and A200U45 Auto-Adjust® II Turbo-Meters



GENERAL ASSEMBLY SECTION VIEW



PARTIAL VIEW OF OUTLET END

Common abbreviations found throughout the parts list include:

- BTS = Blade Tip Sensor
- 1M = One Main Rotor Sensor
- 2M = Two Main Rotor Sensors
- 1S = One Sensing Rotor Sensor
- 2S = Two Sensing Rotor Sensors
- AR = As Required

“LP” designates ANSI 150 (240 psi)
ISO PN 20 (16 bar)

“HP” designates ANSI 300 (720 psi)
ANSI 600 (1440 psi)
ISO PN 50 (50 bar)
ISO PN 110 (100 bar)

D.I. is Ductile Iron

ILL. NO.	QTY. REQD.	PART DESCRIPTION	PART NUMBER
1‡	1	Main Body Assy., ANSI 150, D.I., A200U30	00856-611-26000
		Main Body Assy., ANSI 300, Steel, A200U30, ***	00856-611-62000
		Main Body Assy., ANSI 600, Steel, A200U30, ***	00856-611-90000
		Main Body Assy., ISO PN 20, D.I., A200U30	00856-611-27000
		Main Body Assy., ISO PN 50, Steel, A200U30, ***	00856-611-63000
		Main Body Assy., ISO PN 50, -40°C, Steel, A200U30, ***	00856-611-65000
		Main Body Assy., ISO PN 110, Steel, A200U30, ***	00856-611-91000
		Main Body Assy., ISO PN 110, -40°C, Steel, A200U30, ***	00856-611-93000
		Main Body Assy., ANSI 150, D.I., A200U45	00826-611-26000
		Main Body Assy., ANSI 300, Steel, A200U45, ***	00826-611-62000
		Main Body Assy., ANSI 600, Steel, A200U45, ***	00826-611-90000
		Main Body Assy., ISO PN 20, D.I., A200U45	00826-611-27000
		Main Body Assy., ISO PN 50, Steel, A200U45, ***	00826-611-63000
		Main Body Assy., ISO PN 50, -40°C, Steel, A200U45, ***	00826-611-65000
		Main Body Assy., ISO PN 110, Steel, A200U45, ***	00826-611-91000
		Main Body Assy., ISO PN 110, -40°C, Steel, A200U45, ***	00826-611-93000
2	1	Nosecone With Straightening Vanes, Except ANSI 600/PN110	00626-305-21000
		Nosecone With Straightening Vanes, ANSI 600/PN110	00826-305-21000
3	3	#8-32 x 3/8 Lg Screw, Truss Hd, Sta Stil	950426
4	1	Badge, Body, ANSI 150 (240#) A200U30	00856-073-27555
		Badge, Body, ANSI 300 (720#) A200U30	00856-073-60555
		Badge, Body, ANSI 600 (1440#) A200U30	00856-073-90555
		Badge, Body, ISO PN 20 (240#) A200U30	00856-073-28555
		Badge, Body, ISO PN 50 (720#) A200U30	00856-073-65555
		Badge, Body, ISO PN 50 -40°C (720#) A200U30	00856-073-69555
		Badge, Body, ISO PN 110 (1440#) A200U30	00856-073-97555
		Badge, Body, ISO PN 110 -40°C (1440#) A200U30	00856-073-95555
		Badge, Body, ANSI 150 (240#) A200U45	00826-073-27555
		Badge, Body, ANSI 300 (720#) A200U45	00826-073-60555
		Badge, Body, ANSI 600 (1440#) A200U45	00826-073-90555
		Badge, Body, ISO PN 20 (240#) A200U45	00826-073-28555
		Badge, Body, ISO PN 50 (720#) A200U45	00826-073-65555
		Badge, Body, ISO PN 50 -40°C (720#) A200U45	00826-073-69555
		Badge, Body, ISO PN 110 (1440#) A200U45	00826-073-97555
		Badge, Body, ISO PN 110 -40°C (1440#) A200U45	00826-073-95555

ILL. NO.	QTY. REQD.	PART DESCRIPTION	PART NUMBER
5	4	Screw, #4 x 3/16 Lg, Dr	903004
6	1	O-Ring, Top Pl To Body, Buna, LP	934352
		O-Ring, Top Pl To Body, Buna, HP	950191
		O-Ring, Top Pl To Body, Viton, LP	906745
		O-Ring, Top Pl To Body, Viton, HP	906746
7	2	Pipe Plug, Seal, 1/4 NPT	00841-080-00000
8	1	Badge, Inlet (Body)	01516-090-02000
9	2	Screw, #2 x 1/8 Lg, Dr, Brass	903003
10	AR	Tubing	800770
11	1	Elbow, 45°	950762
12	1	Badge, Int. Mech., A200U45 (Not Shown)	00836-073-02555
		Badge, Int. Mech., A200U30 (Not Shown)	00846-073-02555
13	4	Screw, #0 x 1/8 Lg, Dr, Br (Not Shown)	903001
14	1	Badge, Pulse Factor, FT ³	00632-073-10000
		Badge, Pulse Factor, M ³	00632-073-11000
15	2	Screw, #8-32 x 1/4 Lg, Rnd Hd, Sta Stil	903055
16	11	Screw, 1/2-13 x 1 3/4 Lg, Cap, Hex Hd, Steel, Gr. 5, LP, ANSI	910108
	13	Screw, 7/8-9 x 2 3/4 Lg, Cap, Hex Hd, Steel, Gr. 8, HP, ANSI	935678
	11	Screw, M12 x 1.75 x 45mm Lg, Cap, Hex Hd, Steel, Gr. 8, LP, ISO	951345
	13	Screw, M22 x 1.5 x 70mm Lg, Cap, Hex Hd, Steel, Gr. 8, HP, ISO	951346
17	1	Screw, 1/2-13 x 1 3/4 Lg, Cap, Hex Hd, Steel, Gr. 5, LP, ANSI	00626-056-00000
		Screw, 7/8-9 x 2 3/4 Lg, Cap, Hex Hd, Steel, Gr. 8, HP, ANSI	00626-057-91000
		Screw, M12 x 1.75 x 45mm Lg, Cap, Hex Hd, Steel, Gr. 8, LP, ISO	00836-056-00000
		Screw, M22 x 1.5 x 70mm Lg, Cap, Hex Hd, Steel, Gr. 8, HP, ISO	00836-056-01000
18	2	Screw, #8-32 x 3/8 Lg, Sta Stil, Fil Hd	903371
19	1	Spring Clip	00641-089-00000
20	1	Extractor Bracket	00634-089-01000
21	1	Lubrication Fitting Assembly	00624-145-00000
22	1	Pipe Bushing, Hex	950759
23	1	Valve, 1/4" NPT, HP	950710
		Valve, 1/4" NPT, LP	950428
24	1	Pipe Nipple, 1/4" NPT, HP	950760
		Pipe Nipple, 1/4" NPT, LP	904765
25	2	Vent Cap Assembly	00624-505-01
26	1	Oil Pump (On Board) (Optional)	951338
27	2	Screw, 1/4-20 x 2 Lg, Fil Hd	919862
28	1	Connector, Tube	951381

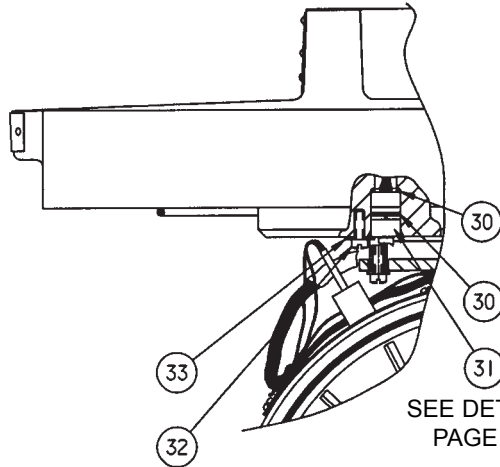
* Recommended Spare Parts

‡ Body Assemblies include Items 4, 5, 7, 8 & 9 (-29°C Rating, unless otherwise specified.)

*** Radiographed Body Assembly Available

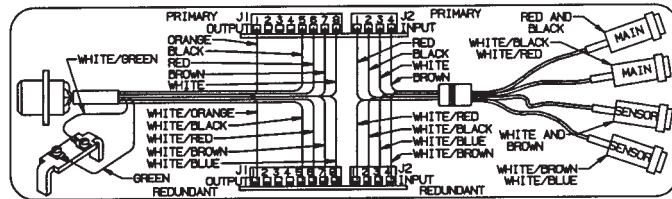
See Sales Representative

200mm, A200U30 and A200U45 Auto-Adjust® II Turbo-Meters

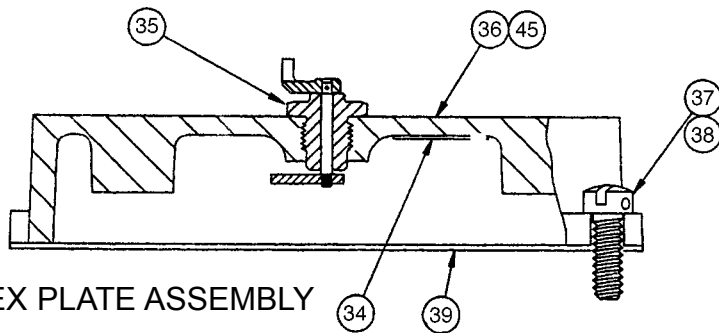


FEED THRU ASSEMBLY

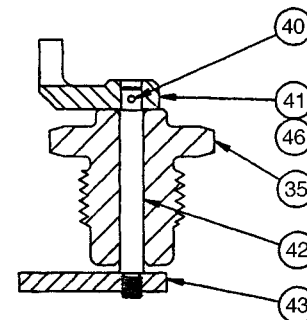
SEE DETAIL
PAGE 5



SELF ADHESIVE WIRING LABEL



INDEX PLATE ASSEMBLY

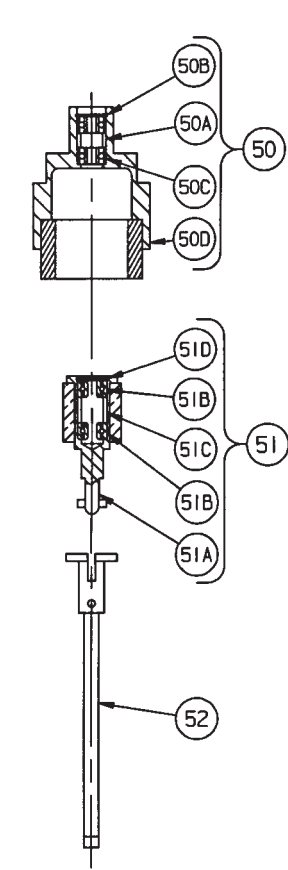


INDEX SHAFT AND
GLAND ASSEMBLY

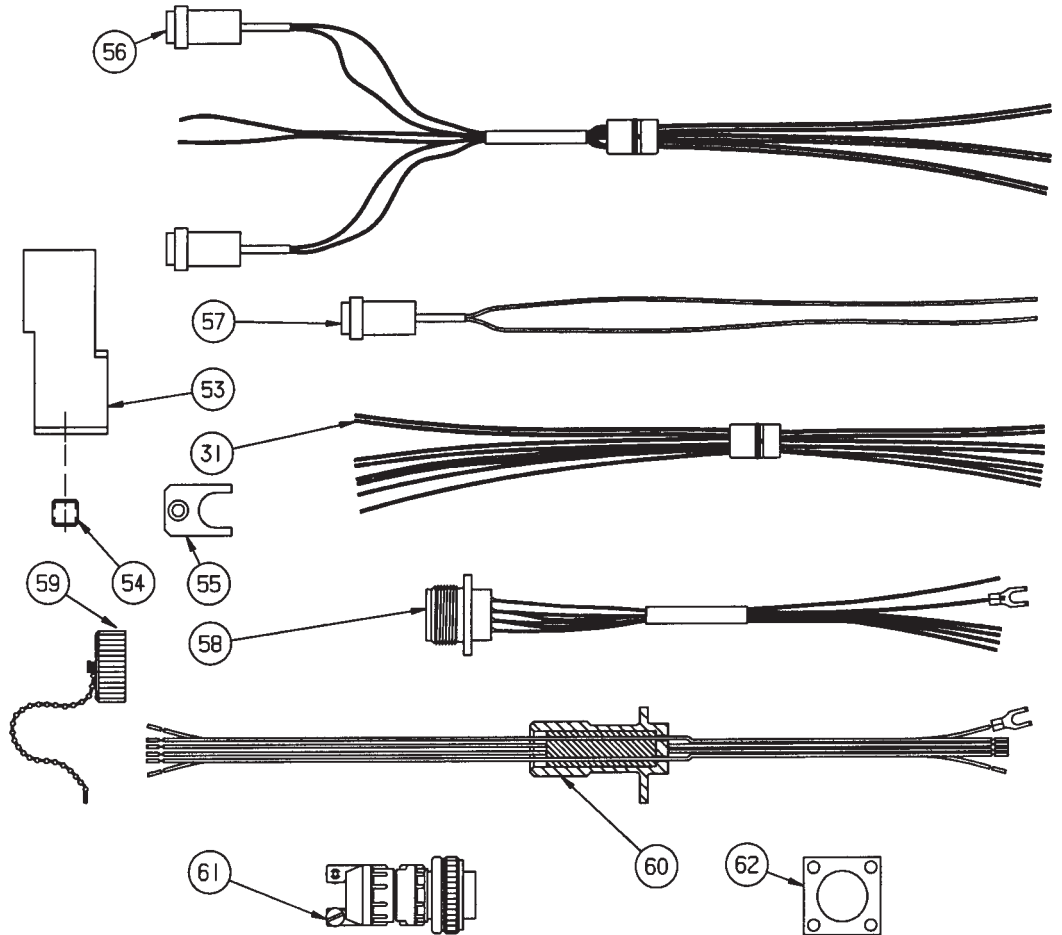
INDEX PLATE ASSEMBLY COMPONENTS

ILL. NO.	QTY. REQD.	PART DESCRIPTION	PART NUMBER
30	2	O-Ring, Buna	946861
		O-Ring, Viton	902418
		O-Ring, Viton -40°C	950774
31	1	Sensor / Feedthru Assy, 1M/1S, Buna (Includes Item 30, Buna)	951231
		8 Wire Feedthru Assy, Buna (Includes Item 30, Buna)	951235
		Sensor / Feedthru Assy, 1M/1S, Viton	00632-317-02000
32	1	Screw, #8-32 x 3/8 Lg, Fil Hd, Sta Stl	903371
33	1	Washer, #8, Reg, Sta Stl	950448
34	1	Label, Wiring, Self Adhesive	00651-105-00000
35	1	Gland	00624-023-01000
36	1	Index Plate	00624-004-21000
37	2	Screw, 5/16-18 x 3/4 Lg, Fil Hd, Steel	919904
38	2	Screw, Seal, 5/16-18 x 3/4 Lg, Fil Hd, Steel	00162-059-02000
* 39	1	Gasket, Index Plate	00624-160-03000
* 40	1	Pin, Shear, Shaft / Dog, Top	00624-056-00000
41	1	Dog, Index Shaft, Top	00624-061-04000
42	1	Shaft, Index	00624-054-03000
43	1	Dog, Index Shaft, Bottom	00624-071-00000
45	1	Index Box Assembly	00624-504-21000
46	1	Index Shaft Assembly	00624-554-02000

* Recommended Spare Parts



**INDEX
MECHANICAL
DRIVE
COMPONENTS**



**WIRING SYSTEM
COMPONENTS**

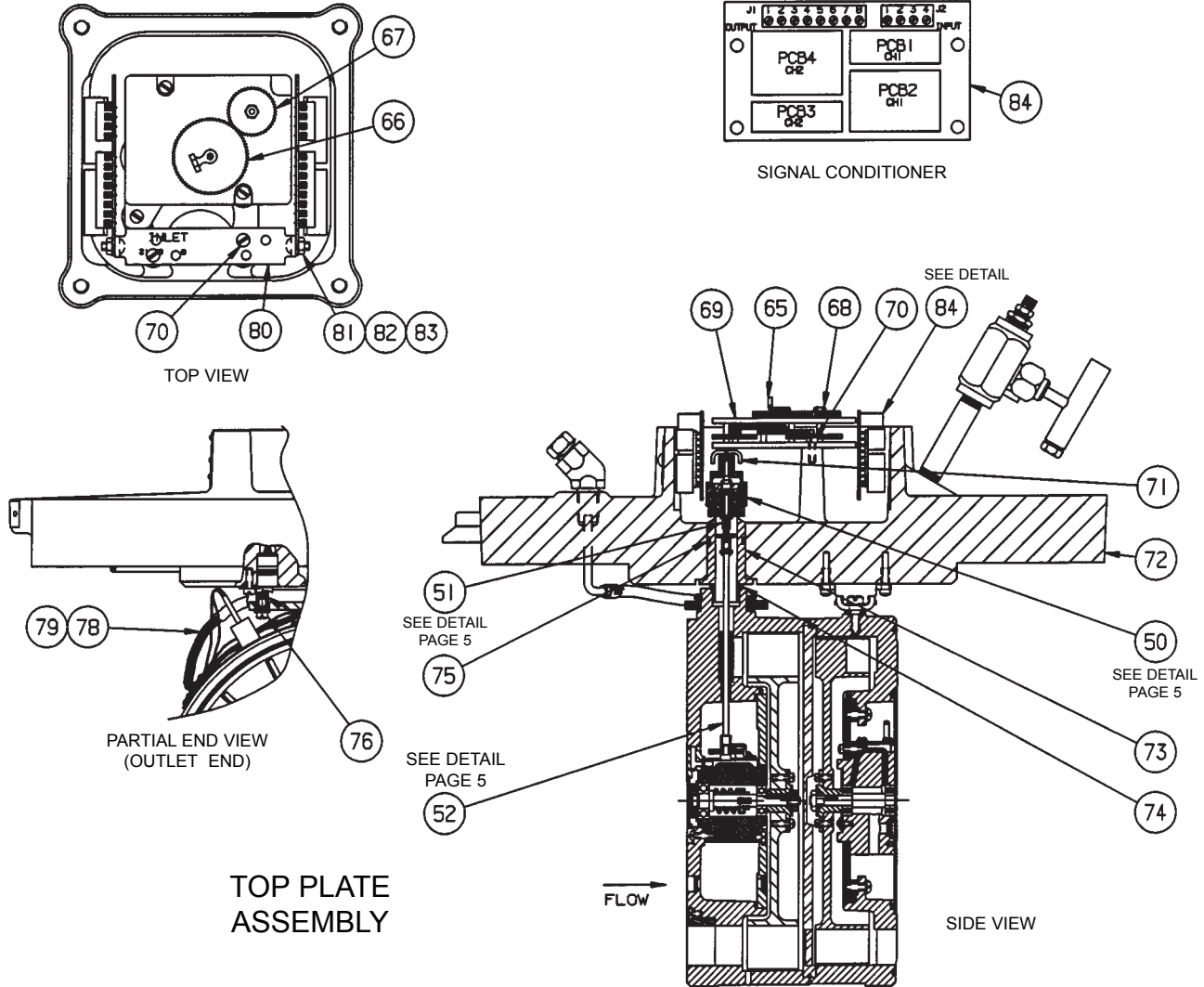
MECHANICAL DRIVE AND WIRING SYSTEM COMPONENTS

ILL. NO.	QTY. REQD.	PART DESCRIPTION	PART NUMBER
* 50	1	Follower Magnet Assembly (Includes Items 50A-50D)	00624-313-20000
50A	1	Spacer	00624-106-20000
50B	1	Ring, Retaining	904691
50C	2	Bearing, Ball	905462
50D	1	Follower and Magnet Holder Assembly	00624-213-20000
* 51	1	Driver Magnet Holder Assembly (Includes Items 51A-51D)	00631-334-00000
51A	1	Driver Magnet and Pin Assembly	00631-234-02000
51B	2	Bearing, Ball	905462
51C	1	Spacer	00622-106-03000
51D	1	Ring, Retaining	904691
52	1	Coupling Shaft Assembly, LP	00632-345-00000
		Coupling Shaft Assembly, HP	00632-345-80000
53	1	Connector Manifold, Bendix	00651-122-05000

ILL. NO.	QTY. REQD.	PART DESCRIPTION	PART NUMBER
54	1	Screw, Set, 5/16-18 x 3/8 Lg, Socket	906220
55	AR	Retainer, Sensor Coil	00651-040-02000
56	1	Feedthru Assy, Blade Tip Sensor	951231
* 57	AR	Sensor Coil Assy, Sensing Rotor, Wh/Br	951236
		Sensor Coil Assy, Main Rotor, Red/Blk	951237
58	AR	Six Pin/Six Wire Bendix, All	00651-101-00000
		Six Pin/Four Wire Bendix, 2M/1S	00651-101-01000
		Six Pin/Four Wire Bendix, 1M/2S	00651-101-02000
		Six Pin/Six Wire Bendix, 2M/2S	00651-101-03000
59	AR	Cap And Chain, Bendix Connector	00632-131-00000
60	AR	Adaptor Assy, Six Wire Conduit	00651-330-00000
		Adaptor Assy, Eleven Wire, Conduit	00651-330-01000
61	AR	Plug, Six Socket, Bendix	951245
62	AR	Gasket, Bendix Connector	905321

* Recommended Spare Parts

200mm, A200U30 and A200U45 Auto-Adjust® II Turbo-Meters

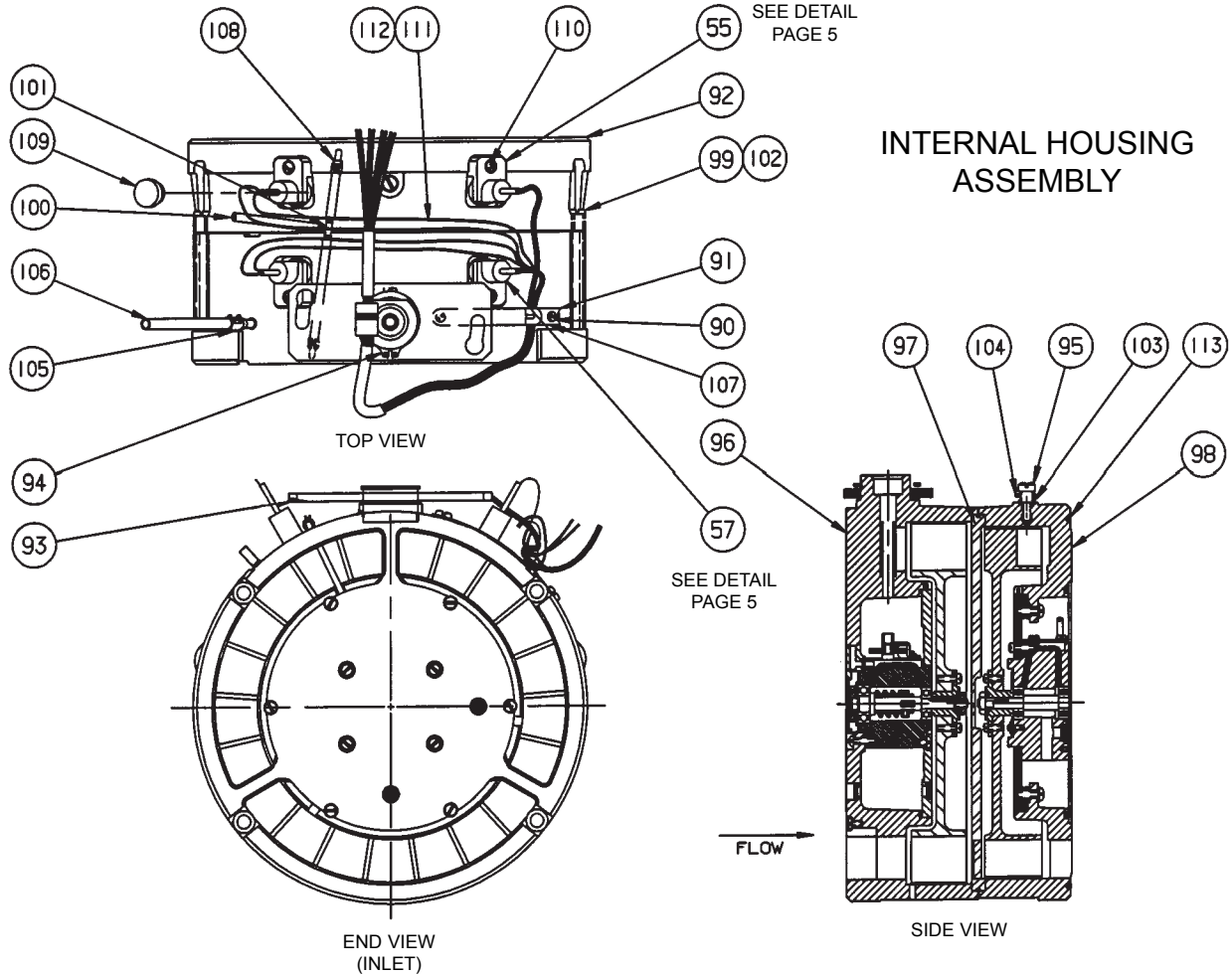


TOP PLATE ASSEMBLY COMPONENTS

ILL. NO.	QTY. REQD.	PART DESCRIPTION	PART NUMBER
65	1	Dog, Output, Int Gear, Top	00266-071-03000
66	1	Large Change Gear XX=Gear Blank Diameter YY=No. of Teeth	00624-3XX-YY
67	1	Small Change Gear XX=Gear Blank Diameter YY=No. of Teeth	00624-3XX-YY
68	1	Nut, #4-40, Hex, Sta Stl	907639
* 69	1	Int Gear Assembly 10 CU M	00636-212-40000
		Int Gear Assembly 1.0 CU M	00632-212-42000
		Int Gear Assembly 1000 CU FT	00634-212-40000
70	AR	Screw, #8-32 x 3/8 Lg, Fil Hd, Sta Stl	903371
71	1	Dog, Input, Int Gear, Bottom	00624-061-20000
72	1	Top Plate Assembly, ANSI 150	00636-303-31000
		Top Plate Assembly, ISO PN 20	00836-303-31000
		Top Plate Assembly, HP, ANSI	00636-303-91000
		Top Plate Assembly, HP, ISO	00836-303-91000
* 73	1	Driver Magnet Well, LP, Buna, Includes Item 75	00624-244-20000
		Driver Magnet Well, HP, Buna, Includes Item 75	00626-244-90000
		Driver Magnet Well, HP, Viton, Includes Item 75	00626-244-91000

ILL. NO.	QTY. REQD.	PART DESCRIPTION	PART NUMBER
* 74	1	Seal, Driver Magnet Well, Buna	904214
		Seal, Driver Magnet Well, Viton	906736
* 75	1	O-Ring, Driver Magnet Well, Buna	950193
		O-Ring, Driver Magnet Well, Viton	908264
76	2	Screw	00632-056-01
78	AR	Solder	750155
79	AR	Shrink Tube	800633
80	1	Bracket, Mounting, Signal Conditioner	00651-048-00000
81	AR	Lockwasher, #8	950371
82	AR	Nut, #8-32, Hex, Sta Stl	903924
83	AR	Screw, #8-32 x 3/8 Lg, Sta Stl, Pan Hd	950839
* 84	AR	Signal Conditioner, Dual Channel	951232
		Signal Conditioner, Single Channel	951233

* Recommended Spare Parts



INTERNAL HOUSING ASSEMBLY COMPONENTS

ILL. NO.	QTY. REQD.	PART DESCRIPTION	PART NUMBER
90	2	Screw, #4-40 x 1/4 Lg, Pan Hd, Sta Stl	950380
91	1	Badge, Serial Number	00634-073-01000
** 92	1	Int Hsg, LP, A200U30, Buna, 1M/1S, M ³	00646-302-17000
		Int Hsg, HP, A200U30, Buna, 1M/1S, M ³	00646-302-20000
		Int Hsg, LP, A200U30, Buna, 1M/1S, FT ³	00646-302-16000
		Int Hsg, HP, A200U30, Buna, 1M/1S, FT ³	00646-302-19000
		Int Hsg, LP, A200U45, Buna, 1M/1S, M ³	00636-302-17000
		Int Hsg, HP, A200U45, Buna, 1M/1S, M ³	00636-302-20000
		Int Hsg, LP, A200U45, Buna, 1M/1S, FT ³	00636-302-16000
		Int Hsg, HP, A200U45, Buna, 1M/1S, FT ³	00636-302-19000
93	1	Adapter Plate	00632-062-01000
94	1	Retaining Ring	904435
95	1	Shoulder Screw, Sta Stl	950319
96	1	Main Rotor Assembly	☐
97	1	Center Plate	☐
98	1	Sensing Rotor Assembly	☐
99	2	Screw, #10-24 x 3/4 Lg, Pan Hd, Sta Stl, (Max Torque is 24 IN/LBS.)	950384

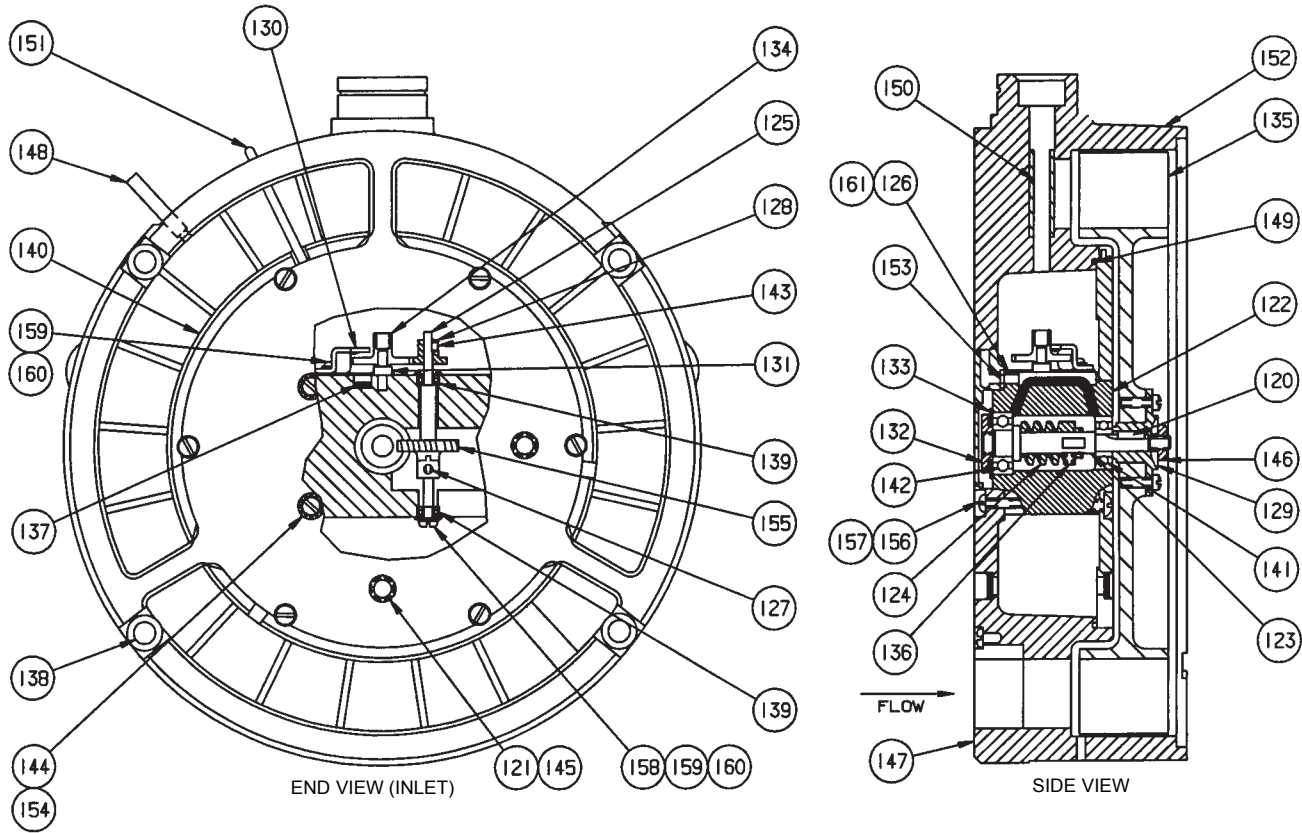
ILL. NO.	QTY. REQD.	PART DESCRIPTION	PART NUMBER
100	AR	Tubing, Oil Line	99993
101	1	Tee, Oil Line	950247
102	AR	Aerolubriplate	1191073
103	1	O-Ring, Module Positioning, Buna	934005
		O-Ring, Module Positioning, Viton	904839
104	1	Disc Spring	950749
105	2	Compression Ring, Pressure Line (A200U45)	950772
106	AR	Tubing, Pressure (A200U45 only)	800700
107	1	Wire Clip	950517
108	3	Compression Ring, Oil Line	950682
109	AR	Plug, Sensor Hole	00651-043-01000
110	AR	Screw, #8-32 x 3/8 Lg, Fil Hd, Sta Stl	903371
111	AR	Solder	750155
112	1	Shrink Tubing	800633
113	1	Tetraseal	950708
114	1	Retrofit Adapt. (Not Shown)	00632-190-00000
115	1	Oil Tube Repl. Assy. (Not Shown)	00636-325-00000

* Recommended Spare Parts

** Int Hsg. Assemblies are calibrated and include Change Gears.

☐ Illustration Nos. 96, 97, & 98 affect calibration. These components must be ordered as a -302- Assy. and cannot be supplied as separate items.

200mm, A200U30 and A200U45 Auto-Adjust® II Turbo-Meters



MAIN ROTOR ASSEMBLY

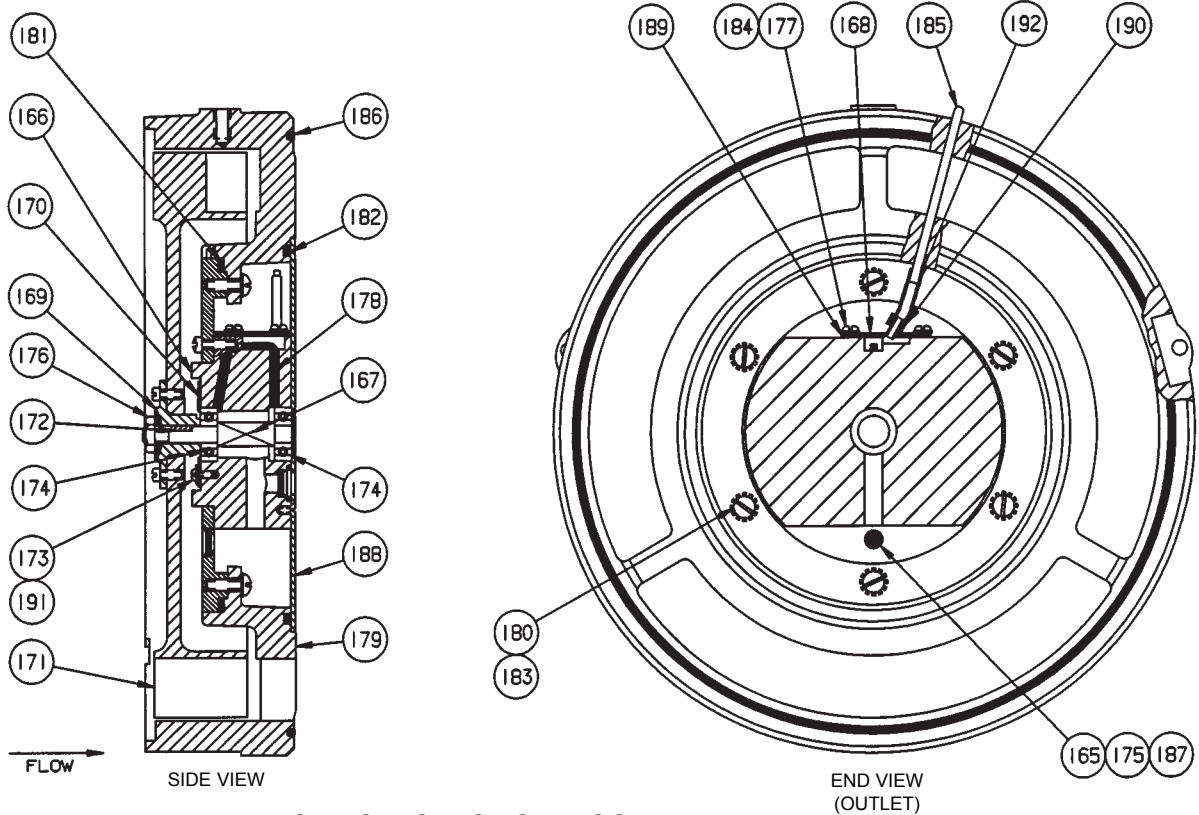
MAIN ROTOR ASSEMBLY COMPONENTS

ILL. NO.	QTY. REQD.	PART DESCRIPTION	PART NUMBER
120	1	Pin, Rotor, Locking	00624-069-00000
121	2	Filter, Screen	00622-083-01000
122	1	Bracket, Bearing	00636-209-00000
123	1	Shaft, Main Rotor	00636-024-02000
124	1	Worm	00634-017-00000
125	1	Shaft, Wormwheel	00624-046-20000
126	1	Plate, Cover, Oil Reservoir	00636-053-00000
127	1	Hub, Wormwheel	00624-070-02000
128	1	Gear, A200U45	00626-317-17000
		Gear, A200U30	00646-317-23000
129	1	Spherical Washer Set	00636-077-00000
130	1	Retainer, Gear	00624-080-00000
131	1	Post, Drive Gear	00631-028-00000
132	1	Nut, Retaining	00636-084-00000
133	1	Retainer, Bearing	00636-117-00000
134	1	Gear, Upshaft, A200U45	00636-444-44000
		Gear, Upshaft, A200U30	00636-444-38000
135	1	Rotor And Hub Assembly	□
136	1	Screw, Set, #4-40 x 1/8	950305
137	2	1/2" Oil Wick	1191430
138	4	Positioner, Module Seal	950756
* 139	2	Bearing, Ball	908660
140	3	Straightening Vane Inserts	00636-025-00000
* 141	1	Bearing, Ball	950277

ILL. NO.	QTY. REQD.	PART DESCRIPTION	PART NUMBER
* 142	1	Bearing, Ball	906019
143	1	Screw, Set, #6-32 x 1/8 Lg. Hex Soc	950375
144	4	Screw, #6-32 x 1/2 Lg. Rnd Hd. Sta Stl	950373
145	1	Retaining Ring	904419
146	1	Nut, Rotor Retaining	00636-084-00000
147	1	Carrier Assy. Includes Items 121,145, 148,150, 152, 138, 140 and 151	□
148	1	Tube, Pressure Tap (A200U45 only)	00634-079-02000
* 149	1	O-Ring, Buna	950424
		O-Ring, Viton	950481
150	1	Shield, Tube	00636-082-01000
151	1	Tube, Oil	00634-079-01000
152	1	Carrier, w/out Heli-Coil Inserts	□
* 153	1	Seal, Buna	00636-160-09000
		Seal, Viton	908285
154	4	Lockwasher, #6	950144
155	1	Wormwheel - 15T	00624-035-00000
156	3	Screw, #3-48 x 5/16, Sta Stl	903013
157	3	Lockwasher, #3, Int. Tooth, Sta Stl	950372
158	2	Plate, Bearing Retainer	00622-117-01000
159	6	Screw, #4-40 x 1/4, Pan Hd. Sta Stl	950380
160	6	Lockwasher, #4, Ext. Tooth, Sta Stl	950078
161	1	Gasket, Oil Reservoir	00636-160-07000

* Recommended Spare Parts

□ Illustration Nos. 135, 147 & 152 affect calibration. These components must be ordered in combination with a Sensing Rotor Assembly, Center Plate and Internal Housing as a -302- Assembly.



SENSING ROTOR ASSEMBLY

SENSING ROTOR ASSEMBLY COMPONENTS

ILL. NO.	QTY. REQD.	PART DESCRIPTION	PART NUMBER
165	2	Filter, Screen	00622-083-01000
166	1	Bracket, Bearing	00636-221-00000
167	1	Shaft, Rotor	00636-024-01000
168	1	Oil Reservoir Cover Assembly	00636-253-00000
169	1	Spherical Washer	00636-077-00000
170	1	Retainer, Bearing	00636-117-01000
171	1	Rotor and Hub Assembly	☐
172	1	Pin, Rotor Locking	00624-069-00000
173	3	Screw, #3-48 x 5/16 Lg, Rnd Hd, Sta Stl	903013
* 174	2	Bearing, Ball, Rotor Shaft	950277
175	2	Retaining Ring	904419
176	1	Nut, Rotor Retaining	906180
177	4	Screw, #4-40 x 1/4 LG, Rnd Hd, Sta Stl (Max Torque is 24 IN/LB)	950380
178	2	1/2" Oil Wick	1191430
179	1	Carrier Assembly 1 or 2 Sensors (Includes Ill. Nos. 165, 175, 186 & 187)	☐
180	6	Screw, #8-32 x 1/2 Lg, Rnd Hd, Sta Stl	908722
* 181	1	Tetraseal, Buna	950278
		Tetraseal, Viton	950482
182	1	Tetraseal, Buna	908553
		Tetraseal, Viton	950453

ILL. NO.	QTY. REQD.	PART DESCRIPTION	PART NUMBER
183	6	Lockwasher, #8, Internal Tooth	950371
184	4	Lockwasher, #4, External Tooth	950078
185	1	Tube, Oiling	00636-079-01000
186	1	Seal, Module	950708
187	2	Tetraseal, Buna	950320
		Tetraseal, Viton	950480
188	1	Housing Plate	00636-010-00000
189	1	Gasket, Oil Reservoir	00636-160-08000
190	1	Compression Ring	950682
191	3	Lockwasher, #3, Int. Tooth, Sta Stl	950372
192	AR	Tubing, Oiling	99993

Accessories (Not Shown)

200	AR	Oil, 4 Ounce Bottle	00622-405-01000
201	AR	Oil, 1 Gallon Bottle	00622-405-02000
202	AR	Lubrication Hand Gun	00624-400-00000
203	AR	Top Plate, Blank, ANSI 150, D.I.	00826-003-36000
204	AR	Top Plate, Blank, ANSI 300/600, Steel	00826-003-93000
205	AR	Top Plate, Blank, ISO PN 20, D.I.	00826-003-35000
206	AR	Top Plate, Blank, ISO PN 50/110	00826-003-92000

* Recommended Spare Parts

☐ Illustration Nos. 171 & 179 affect calibration. These components must be ordered in combination with a Main Rotor Assembly, Center Plate and Internal Housing as a -302- Assembly.



805 Liberty Boulevard

P.O. Box 528

DuBois, PA 15801

814-375-8875

Fax 814-375-8460

Authorized Distributor

All products purchased and services performed are subject to Sensus' terms of sale, available at either; <http://na.sensus.com/TC/TermsConditions.pdf> or 1-800-METER-IT. Sensus reserves the right to modify these terms and conditions in its own discretion without notice to the customer.

This document is for informational purposes only, and SENSUS MAKES NO EXPRESS WARRANTIES IN THIS DOCUMENT. FURTHERMORE, THERE ARE NO IMPLIED WARRANTIES, INCLUDING WITHOUT LIMITATION, WARRANTIES AS TO FITNESS FOR A PARTICULAR PURPOSE AND MERCHANTABILITY. ANY USE OF THE PRODUCTS THAT IS NOT SPECIFICALLY PERMITTED HEREIN IS PROHIBITED.